

BIJLAGE 3: Voorbeelden

1. Mutaties A820,M	2
1.1. Origineel + prefix RSZ en RSZPPO	2
1.2. Wijziging	4
1.3. Annulatie (RSZPPO).....	5
1.4. Reactivatie	7
1.5. Parts.....	8
1.5.1. Attest in 1 deel.....	8
1.5.2. Zelfde attest in meerdere delen	10
1.6. Oriolusflag bij BIS-nummers (dummy-attesten).....	12
1.6.1. Voorbeeld vlag van 1 naar 0 (enkel “il faut”)	12
2. Totaalbericht T820, M.....	13
2.1. RSZ(PPO) maakt een bericht T820 M over aan KSZ.....	13
2.2. KSZ maakt bericht T820 M over aan ISS	13
2.3. KSZ antwoord aan RSZ(PPO)	14
2.3.1. Positief antwoord.....	14
2.3.2. Negatief antwoord	14
3. Consultatie A820, L	15
3.1. De vraag	15
3.2. Next	17
3.2.1. Vraag	17
3.2.2. Antwoord.....	17
3.3. Part	18
3.3.1. Vraag	18
3.3.2. Antwoord.....	18
3.4. Attest met anomalieën	21
3.5. Attest in verschillende variantes	22
3.5.1. Antwoord met variante 0002.....	22
3.5.2. Antwoord met variante 0006.....	23
3.5.3. Antwoord met variante 0008.....	24
3.6. X001 en Localization (semi online)	25
3.6.1. Positief antwoord.....	25
3.6.2. Negatief antwoord	25
4. Consultaties L822.....	26
4.1. Vraag	26
4.2. Antwoord.....	27

Dit document bevat typevoorbeelden. Deze bevatten niet altijd reële waarden.

1. Mutaties A820,M

1.1. Origineel + prefix RSZ en RSZPPO

Vb 1: origineel: Hoe te herkennen?

Attestation status = 0

Attestation Identification = Attestation Situation Nbr

Geen Previous Situation Nbr

Voorbeeld: il y a record in XML-formaat RSZ

Prefix:

TAPEA101200000000000980502800902512345D0M61020723574A820

00000009DMFAA00000014300710250044 01000 2003040120030630 003

gevolgd door een XML-gegevensgedeelte:

```
<?xml version="1.0" encoding="UTF-8"?>
<A820 xmlns="http://www.ksz-bess.fgov.be/XmlSchema" xmlns:xsi="http://www.w3.org/2001/XMLSchema-instance"
xsi:schemaLocation="http://www.ksz-bess.fgov.be/XmlSchema //Devdisk\Relevés\Projects\DMFAAT-1\A820-0001.xsd"
version="005" processType="M">
<Identifier>DMFAA0000001430</Identifier>
<Attestation>
<AttestationIdentification>9805028</AttestationIdentification>
<AttestationSituationNbr>9805028</AttestationSituationNbr>
<AttestationStatus>0</AttestationStatus>
<AttestationCreationDate>2005-06-21</AttestationCreationDate>
<AttEmployerDeclaration>
<Quarter>20032</Quarter>
<NLOSSRegistrationNbr>153673607</NLOSSRegistrationNbr>
<PLAIndicator>1</PLAIndicator>
<Trusteeship>0</Trusteeship>
<CompanyID>424534752</CompanyID>
<NetOwedAmount>3492862</NetOwedAmount>
<System5>0</System5>
<HolidayStartingDate>2003-06-01</HolidayStartingDate>
<UserQuality>12</UserQuality>
<AttNaturalPerson>
<INSS>61020723574</INSS>
<OriolusValidationCode>0</OriolusValidationCode>
<AttWorkerRecord>
<EmployerClass>000</EmployerClass>
<WorkerCode>495</WorkerCode>
<NLOSSQuarterStartingDate>2003-04-01</NLOSSQuarterStartingDate>
<NLOSSQuarterEndingDate>2003-07-30</NLOSSQuarterEndingDate>
<Border>0</Border>
<AttOccupation>
<OccupationSequenceNbr>1</OccupationSequenceNbr>
<InternalOccupationNbr>330001ADKCB001</InternalOccupationNbr>
<OccupationStartingDate>2002-05-24</OccupationStartingDate>
<JointCommissionNbr>209</JointCommissionNbr>
<WorkingDaysSystem>500</WorkingDaysSystem>
<ContractType>0</ContractType>
<DeductServicePercent>102</DeductServicePercent>
<AttService>
<ServiceSequenceNbr>1</ServiceSequenceNbr>
<ServiceCode>1</ServiceCode>
<ServiceNbrDays>6200</ServiceNbrDays>
</AttService>
<AttRemun>
<RemunSequenceNbr>1</RemunSequenceNbr>
<RemunCode>1</RemunCode>
<RemunAmount>407240</RemunAmount>
</AttRemun>
<AttRemun>
<RemunSequenceNbr>2</RemunSequenceNbr>
<RemunCode>2</RemunCode>
<BonusPaymentFrequency>12</BonusPaymentFrequency>
<RemunAmount>98320</RemunAmount>
</AttRemun>
</AttOccupation>
</AttNaturalPerson>
</AttWorkerRecord>
</AttService>
</AttRemun>
</Attestation>
</A820>
```

</AttWorkerRecord>
</AttNaturalPerson>
</AttEmployerDeclaration>
</Attestation>
</A820>

Voorbeeld: il y a record in XML-formaat RSZPPO

Prefix:

TAPEA1013002000000014313262009002512345D0M78122918288A820
00000012DPPLA0000000800710190820 01000 2005100120051231 003

gevolgd door een XML-gegevensgedeelte:

```
<?xml version="1.0" encoding="UTF-8" ?>  
<A820 xmlns="http://www.ksz-bess.fgov.be/XmlSchema" xmlns:xsi="http://www.w3.org/2001/XMLSchema-instance"  
  xsi:schemaLocation="http://www.ksz-bess.fgov.be/XmlSchema \\Devdisk\Relevés\Projects\DMFAAT-1\A820-0001.xsd" version="005"  
  processType="M">  
  <Identifier>DPPLA0000000080</Identifier>  
  <Attestation>  
    <AttestationIdentification>14313262</AttestationIdentification>  
    <AttestationSituationNbr>14313262</AttestationSituationNbr>  
    <AttestationStatus>0</AttestationStatus>  
    <AttestationCreationDate>2005-12-06</AttestationCreationDate>  
    <AttEmployerDeclaration>  
      <Quarter>20054</Quarter>  
      <NLOSSRegistrationNbr>56960016</NLOSSRegistrationNbr>  
      <PLAIndicator>2</PLAIndicator>  
      <Trusteeship>0</Trusteeship>  
      <CompanyID>237224881</CompanyID>  
      <NetOwedAmount>4213740</NetOwedAmount>  
      <System5>0</System5>  
      <UserQuality>24</UserQuality>  
    </AttEmployerDeclaration>  
    <AttNaturalPerson>  
      <INSS>78122918288</INSS>  
      <OriolusValidationCode>0</OriolusValidationCode>  
    </AttNaturalPerson>  
    <AttWorkerRecord>  
      <EmployerClass>958</EmployerClass>  
      <WorkerCode>046</WorkerCode>  
      <NLOSSQuarterStartingDate>2005-10-01</NLOSSQuarterStartingDate>  
      <NLOSSQuarterEndingDate>2005-12-31</NLOSSQuarterEndingDate>  
      <Border>0</Border>  
    </AttWorkerRecord>  
    <AttOccupation>  
      <OccupationSequenceNbr>1</OccupationSequenceNbr>  
      <InternalOccupationNbr>3300020LW4003</InternalOccupationNbr>  
      <OccupationStartingDate>2005-05-01</OccupationStartingDate>  
      <JointCommissionNbr>999</JointCommissionNbr>  
      <WorkingDaysSystem>500</WorkingDaysSystem>  
      <ContractType>0</ContractType>  
      <RefMeanWorkingHours>3800</RefMeanWorkingHours>  
      <MeanWorkingHours>3800</MeanWorkingHours>  
      <TenthOrTwelfth>12</TenthOrTwelfth>  
      <DeductServicePercent>9870</DeductServicePercent>  
    </AttOccupation>  
    <AttService>  
      <ServiceSequenceNbr>1</ServiceSequenceNbr>  
      <ServiceCode>1</ServiceCode>  
      <ServiceNbrDays>6600</ServiceNbrDays>  
      <ServiceNbrHours>4975000</ServiceNbrHours>  
    </AttService>  
    <AttRemun>  
      <RemunSequenceNbr>1</RemunSequenceNbr>  
      <RemunCode>1</RemunCode>  
      <RemunAmount>7549000</RemunAmount>  
    </AttRemun>  
  </Attestation>  
</A820>
```

1.2. Wijziging

Vb 2: verbetering: Hoe te herkennen?

Attestation status = 1 ; Attestation Identification <> Attestation Situation Nbr en een Previous Situation Nbr.

Voorbeeld: il y a record in XML-formaat

```
<A820>
  <Identifier>DMFAT0000000003</Identifier>
  <Attestation>
    <AttestationIdentification>400</AttestationIdentification>
    <AttestationSituationNbr>400</AttestationSituationNbr>
    <AttestationStatus>2</AttestationStatus>
    <AttestationCreationDate>2002-12-04</AttestationCreationDate>
    <SituationLink>
      <NextSituationNbr>511</NextSituationNbr>
    </SituationLink>
    <AttEmployerDeclaration>
      (enzovoort, enzovoort)
    </AttEmployerDeclaration>
  </Attestation>
</A820>
```

Voorbeeld: il faut record in XML-formaat

```
<A820>
  <Identifier>DMFAT0000000003</Identifier>
  <Attestation>
    <AttestationIdentification>400</AttestationIdentification>
    <AttestationSituationNbr>511</AttestationSituationNbr>
    <AttestationStatus>1</AttestationStatus>
    <AttestationCreationDate>2002-12-04</AttestationCreationDate>
    <SituationLink>
      <PreviousSituationNbr>400</PreviousSituationNbr>
    </SituationLink>
    <AttEmployerDeclaration>
      (enzovoort, enzovoort)
    </AttEmployerDeclaration>
  </Attestation>
</A820>
```

1.3. Annulatie (RSZPPO)

Vb 3: annulatie: Hoe te herkennen?

Attestation status = 3 en de blokken onder het niveau 'WorkerRecord' worden niet meegegeven (<AttJustification>, <AttOccupation>, <AttWorkerContribution>, <AttWorkerDeduction>, <AttDismissedStatutoryWorkerContribution>, <AttStudentContribution>, <AttEarlyRetirementContribution> en <AttIndemnityWAPM>).

Voorbeeld: il y a record in XML-formaat

```
<?xml version="1.0" encoding="UTF-8" ?>
<A820>
  <Identifier>DPPLA0000000080</Identifier>
  <Attestation>
    <AttestationIdentification>14312213</AttestationIdentification>
    <AttestationSituationNbr>14312213</AttestationSituationNbr>
    <AttestationStatus>2</AttestationStatus>
    <AttestationCreationDate>2005-12-05</AttestationCreationDate>
    <SituationLink>
      <NextSituationNbr>14316550</NextSituationNbr>
    </SituationLink>
    <AttEmployerDeclaration>
      <Quarter>20054</Quarter>
      <NLOSSRegistrationNbr>24290012</NLOSSRegistrationNbr>
      <PLAIndicator>2</PLAIndicator>
      <Trusteeship>0</Trusteeship>
      <CompanyID>207432520</CompanyID>
      <NetOwedAmount>50950</NetOwedAmount>
      <System5>0</System5>
      <UserQuality>12</UserQuality>
      <AttNaturalPerson>
        <INSS>69092701904</INSS>
        <OriolusValidationCode>0</OriolusValidationCode>
      </AttNaturalPerson>
      <AttWorkerRecord>
        <EmployerClass>952</EmployerClass>
        <WorkerCode>495</WorkerCode>
        <NLOSSQuarterStartingDate>2005-10-01</NLOSSQuarterStartingDate>
        <NLOSSQuarterEndingDate>2005-12-31</NLOSSQuarterEndingDate>
        <Border>0</Border>
        <AttOccupation>
          <OccupationSequenceNbr>1</OccupationSequenceNbr>
          <InternalOccupationNbr>3300020HAZ003</InternalOccupationNbr>
          <OccupationStartingDate>2004-01-01</OccupationStartingDate>
          <JointCommissionNbr>999</JointCommissionNbr>
          <WorkingDaysSystem>500</WorkingDaysSystem>
          <ContractType>0</ContractType>
          <RefMeanWorkingHours>3800</RefMeanWorkingHours>
          <MeanWorkingHours>3800</MeanWorkingHours>
          <DeductServicePercent>99</DeductServicePercent>
          <AttService>
            <ServiceSequenceNbr>1</ServiceSequenceNbr>
            <ServiceCode>1</ServiceCode>
            <ServiceNbrDays>6100</ServiceNbrDays>
            <ServiceNbrHours>44710</ServiceNbrHours>
          </AttService>
          <AttRemun>
            <RemunSequenceNbr>1</RemunSequenceNbr>
            <RemunCode>1</RemunCode>
            <RemunAmount>123400</RemunAmount>
          </AttRemun>
        </AttOccupation>
      </AttWorkerRecord>
    </AttNaturalPerson>
  </AttEmployerDeclaration>
</Attestation>
</A820>
```

Voorbeeld: il-faut-record in XML-formaat

```
<?xml version="1.0" encoding="UTF-8" ?>
- <A820>
  <Identifier>DPPLA0000000080</Identifier>
- <Attestation>
  <AttestationIdentification>14312213</AttestationIdentification>
  <AttestationSituationNbr>14316550</AttestationSituationNbr>
  <AttestationStatus>3</AttestationStatus>
  <AttestationCreationDate>2005-12-13</AttestationCreationDate>
- <SituationLink>
  <PreviousSituationNbr>14312213</PreviousSituationNbr>
  </SituationLink>
- <AttEmployerDeclaration>
  <Quarter>20054</Quarter>
  <NLOSSRegistrationNbr>24290012</NLOSSRegistrationNbr>
  <PLAIndicator>2</PLAIndicator>
  <Trusteeship>0</Trusteeship>
  <CompanyID>207432520</CompanyID>
  <NetOwedAmount>0</NetOwedAmount>
  <System5>0</System5>
  <UserQuality>12</UserQuality>
- <AttNaturalPerson>
  <INSS> 69092701904</INSS>
  <OriolusValidationCode>0</OriolusValidationCode>
- <AttWorkerRecord>
  <EmployerClass>952</EmployerClass>
  <WorkerCode>495</WorkerCode>
  <NLOSSQuarterStartingDate>2005-10-01</NLOSSQuarterStartingDate>
  <NLOSSQuarterEndingDate>2005-12-31</NLOSSQuarterEndingDate>
  <Border>0</Border>
</AttWorkerRecord>
</AttNaturalPerson>
</AttEmployerDeclaration>
</Attestation>
</A820>
```

1.4. Reactivatie

Vb: reactivatie: hoe te herkennen?

In het "il faut"-record is de Attestation status = 4 en in het "il y a"-record worden de eventuele blokken <AttJustification>, <AttOccupation>, <AttWorkerContribution>, <AttWorkerDeduction>, <AttDismissedStatutoryWorkerContribution>, <AttStudentContribution>, <AttEarlyRetirementContribution> en <AttIndemnityWAPM> niet meegegeven.

Voorbeeld: il y a-record in XML-formaat

```
<A820>
  <Identifier>DMFAP0000000007</Identifier>
  <Attestation>
    <AttestationIdentification>400</AttestationIdentification>
    <AttestationSituationNbr>712</AttestationSituationNbr>
    <AttestationStatus>2</AttestationStatus>
    <AttestationCreationDate>2002-12-10</AttestationCreationDate>
    <SituationLink>
      <PreviousSituationNbr>511</PreviousSituationNbr>
      <NextSituationNbr>876</NextSituationNbr>
    </SituationLink>
    <AttEmployerDeclaration>
      <Quarter>20031</Quarter>
      <NLOSSRegistrationNbr>199999934</NLOSSRegistrationNbr>
      <Trusteeship>1</Trusteeship>
      <NetOwedAmount>552145</NetOwedAmount>
      <System5>1</System5>
      <AttNaturalPerson>
        <INSS>50081133553</INSS>
        <OriolusValidationCode>1</OriolusValidationCode>
      </AttNaturalPerson>
      <AttWorkerRecord>
        <EmployerClass>158</EmployerClass>
        <WorkerCode>024</WorkerCode>
        <NLOSSQuarterStartingDate>2003-01-01</NLOSSQuarterStartingDate>
        <NLOSSQuarterEndingDate>2003-01-01</NLOSSQuarterEndingDate>
        <Border>1</Border>
      </AttWorkerRecord>
    </AttEmployerDeclaration>
  </Attestation>
</A820>
```

opmerking: bij reactivaties worden de blokken <AttJustification>, <AttOccupation>, <AttWorkerContribution>, <AttWorkerDeduction>, <AttDismissedStatutoryWorkerContribution>, <AttStudentContribution>, <AttEarlyRetirementContribution> en <AttIndemnityWAPM> niet meegegeven in het il y a-record

Voorbeeld: il faut-record in XML-formaat

```
<A820>
  <Identifier>DMFAP0000000007</Identifier>
  <Attestation>
    <AttestationIdentification>400</AttestationIdentification>
    <AttestationSituationNbr>876</AttestationSituationNbr>
    <AttestationStatus>4</AttestationStatus>
    <AttestationCreationDate>2002-12-10</AttestationCreationDate>
    <SituationLink>
      <PreviousSituationNbr>712</PreviousSituationNbr>
    </SituationLink>
    <AttEmployerDeclaration>
      (enzovoort, enzovoort)
    </AttEmployerDeclaration>
  </Attestation>
</A820>
```

1.5. Parts

1.5.1. Attest in 1 deel

Mutatiebericht verzonden door RSZ naar KSZ.

```
TAPEA101200000000000002115900901212345D0M53061421040A820
00000388DMFAA00000001100306130015 01000 2003010120030331 015<?xml
version="1.0" encoding="UTF-8"?><A820 xmlns="SchemaA820"
xmlns:xsi="http://www.w3.org/2001/XMLSchema-instance"
xsi:schemaLocation="SchemaA820 \\Devdisk\Relevs\Projects\DMFAAT~1\A820-0001.xsd"
version="0" processType="M">
<Identifier>DMFAA0000000110</Identifier><Attestation><AttestationIdentification>21159<
/AttestationIdentification><AttestationSituationNbr>21159</AttestationSituationNbr><Attestat
ionStatus>0</AttestationStatus><AttestationCreationDate>2003-06-
13</AttestationCreationDate><AttEmployerDeclaration>
<Quarter>20031</Quarter><NLOSSRegistrationNbr>162843405</NLOSSRegistrationNbr><
Trusteeship>0</Trusteeship><NetOwedAmount>18554</NetOwedAmount><System5>0</Sy
stem5><UserID>1081</UserID><AttNaturalPerson><INSS>53061421040</INSS><OriolusV
alidationCode>0</OriolusValidationCode><AttWorkerRecord><EmployerClass>017</Emplo
yerClass><WorkerCode>015</WorkerCode><NLOSSQuarterStartingDate>2003-01-01
</NLOSSQuarterStartingDate><NLOSSQuarterEndingDate>2003-03-
31</NLOSSQuarterEndingDate><Border>0</Border>
<AttOccupation><OccupationSequenceNbr>1</OccupationSequenceNbr><InternalOccupation
Nbr>31000038MJ00X</InternalOccupationNbr><OccupationStartingDate>2003-02-
22</OccupationStartingDate><OccupationEndingDate>2003-02-22</OccupationEndingDate>
<JointCommissionNbr>302</JointCommissionNbr><WorkingDaysSystem>600</WorkingDa
ysSystem><ContractType>0</ContractType><AttService><ServiceSequenceNbr>1</ServiceS
equenceNbr><ServiceCode>1</ServiceCode><ServiceNbrDays>100</ServiceNbrDays></Att
Service><AttRemun><RemunSequenceNbr>1</RemunSequenceNbr><RemunCode>1</Remu
nCode><RemunAmount>823</RemunAmount></AttRemun></AttOccupation><AttOccupati
on><OccupationSequenceNbr>2</OccupationSequenceNbr><InternalOccupationNbr>310000
38MK009</InternalOccupationNbr><OccupationStartingDate>2003-03-
02</OccupationStartingDate><OccupationEndingDate>2003-03-
02</OccupationEndingDate><JointCommissionNbr>302</JointCommissionNbr>
<WorkingDaysSystem>600</WorkingDaysSystem><ContractType>0</ContractType><AttSe
rvice><ServiceSequenceNbr>1</ServiceSequenceNbr><ServiceCode>1</ServiceCode><Servi
ceNbrDays>100</ServiceNbrDays></AttService><AttRemun><RemunSequenceNbr>1</Rem
unSequenceNbr><RemunCode>1</RemunCode><RemunAmount>1693</RemunAmount></
AttRemun></AttOccupation><AttOccupation><OccupationSequenceNbr>3</OccupationSequ
enceNbr><InternalOccupationNbr>31000038ML00J</InternalOccupationNbr><OccupationSt
artingDate>2003-03-09</OccupationStartingDate> <OccupationEndingDate>2003-03-
09</OccupationEndingDate><JointCommissionNbr>302</JointCommissionNbr>
<WorkingDaysSystem>600</WorkingDaysSystem><ContractType>0</ContractType><AttSe
rvice><ServiceSequenceNbr>1</ServiceSequenceNbr><ServiceCode>1</ServiceCode><Servi
ceNbrDays>100</ServiceNbrDays></AttService><AttRemun><RemunSequenceNbr>1</Rem
unSequenceNbr><RemunCode>1</RemunCode><RemunAmount>1693</RemunAmount></
AttRemun></AttOccupation><AttOccupation><OccupationSequenceNbr>4</OccupationSequ
enceNbr><InternalOccupationNbr>31000038MM00T</InternalOccupationNbr><OccupationS
tartingDate>2003-03-23</OccupationStartingDate> <OccupationEndingDate>2003-03-
```


23</OccupationEndingDate><JointCommissionNbr>302</JointCommissionNbr>
<WorkingDaysSystem>600</WorkingDaysSystem><ContractType>0</ContractType><AttSe
rvice><ServiceSequenceNbr>1</ServiceSequenceNbr><ServiceCode>1</ServiceCode><Servi
ceNbrDays>100</ServiceNbrDays></AttService><AttRemun><RemunSequenceNbr>1</Rem
unSequenceNbr><RemunCode>1</RemunCode><RemunAmount>1693</RemunAmount></
AttRemun></AttOccupation><AttOccupation><OccupationSequenceNbr>5</OccupationSequ
enceNbr><InternalOccupationNbr>31000038MN005</InternalOccupationNbr><OccupationSt
artingDate>2003-03-30</OccupationStartingDate> <OccupationEndingDate>2003-03-
30</OccupationEndingDate><JointCommissionNbr>302</JointCommissionNbr>
<WorkingDaysSystem>600</WorkingDaysSystem><ContractType>0</ContractType><AttSe
rvice><ServiceSequenceNbr>1</ServiceSequenceNbr><ServiceCode>1</ServiceCode><Servi
ceNbrDays>100</ServiceNbrDays></AttService><AttRemun><RemunSequenceNbr>1</Rem
unSequenceNbr><RemunCode>1</RemunCode><RemunAmount>1693</RemunAmount></
AttRemun></AttOccupation></AttWorkerRecord></AttNaturalPerson></AttEmployerDeclara
tion></Attestation></A820>

1.5.2. Zelfde attest in meerdere delen

Mutatiebericht verzonden door RSZ naar KSZ.

Deel 1:

```
TAPEA101200000000000002115900901212345D0M53061421040A820 01/02
00000388DMFAA00000001100306130015 01000 2003010120030331 015<?xml
version="1.0" encoding="UTF-8"?><A820 xmlns="SchemaA820"
xmlns:xsi="http://www.w3.org/2001/XMLSchema-instance"
xsi:schemaLocation="SchemaA820 \\Devdisk\Relevés\Projects\DMFAAT~1\A820-0001.xsd"
version="0"
processType="M"><Identifier>DMFAA0000000110</Identifier><Attestation><AttestationIde
ntification>21159</AttestationIdentification><AttestationSituationNbr>21159</AttestationSit
uationNbr><AttestationStatus>0</AttestationStatus><AttestationCreationDate>2003-06-
13</AttestationCreationDate><AttEmployerDeclaration><Quarter>20031</Quarter><NLOSS
RegistrationNbr>162843405</NLOSSRegistrationNbr><Trusteeship>0</Trusteeship><NetOwed
Amount>18554</NetOwedAmount><System5>0</System5><UserID>1081</UserID><Att
NaturalPerson><INSS>53061421040</INSS><OriolusValidationCode>0</OriolusValidationC
ode><AttWorkerRecord><EmployerClass>017</EmployerClass><WorkerCode>015</Worker
Code><NLOSSQuarterStartingDate>2003-01-
01</NLOSSQuarterStartingDate><NLOSSQuarterEndingDate>2003-03-
31</NLOSSQuarterEndingDate><Border>0</Border><AttOccupation><OccupationSequence
Nbr>1</OccupationSequenceNbr><InternalOccupationNbr>31000038MJ00X</InternalOccup
ationNbr><OccupationStartingDate>2003-02-
22</OccupationStartingDate><OccupationEndingDate>2003-02-
22</OccupationEndingDate><JointCommissionNbr>302</JointCommissionNbr><WorkingDa
ysSystem>600</WorkingDaysSystem><ContractType>0</ContractType><AttService><Servi
ceSequenceNbr>1</ServiceSequenceNbr><ServiceCode>1</ServiceCode><ServiceNbrDays>
100</ServiceNbrDays></AttService><AttRemun><RemunSequenceNbr>1</RemunSequence
Nbr><RemunCode>1</RemunCode><RemunAmount>823</RemunAmount></AttRemun></
AttOccupation><AttOccupation><OccupationSequenceNbr>2</OccupationSequenceNbr><Int
ernalOccupationNbr>31000038MK009</InternalOccupationNbr><OccupationStartingDate>20
03-03-02</OccupationStartingDate><OccupationEndingDate>2003-03-
02</OccupationEndingDate><JointCommissionNbr>302</JointCommissionNbr><WorkingDa
ysSystem>600</WorkingDaysSystem><ContractType>0</ContractType><AttService><Servi
ceSequenceNbr>1</ServiceSequenceNbr><ServiceCode>1</ServiceCode><ServiceNbrDays>
100</ServiceNbrDays></AttService><AttRemun><RemunSequenceNbr>1</RemunSequence
Nbr><RemunCode>1</RemunCode><RemunAmount>1693</RemunAmount></AttRemun></
AttOccupation><AttOccupation><OccupationSequenceNbr>3</OccupationSequenceNbr><In
ternalOccupationNbr>31000038ML00J</InternalOccupationNbr><OccupationStartingDate>2
003-03-09</OccupationStartingDate><OccupationEndingDate>2003-03-
09</OccupationEndingDate><JointCommissionNbr>302</JointCommissionNbr><WorkingDa
ysSystem>600</WorkingDaysSystem><ContractType>0</ContractType><AttService><Servi
ceSequenceNbr>1</ServiceSequenceNbr><ServiceCode>1</ServiceCode><ServiceNbrDays>
100</ServiceNbrDays></AttService><AttRemun><RemunSequenceNbr>1</RemunSequence
Nbr><RemunCode>1</RemunCode><RemunAmount>1693</RemunAmount></AttRemun></
AttOccupation><AttOccupation><OccupationSequenceNbr>4</OccupationSequenceNbr><In
ternalOccupationNbr>31000038MM00T</InternalOccupationNbr><OccupationStartingDate>
2003-03-23</OccupationStartingDate><OccupationEndingDate>2003-03-
23</OccupationEndingDate><JointCommissionNbr>302</JointCommissionNbr><WorkingDa
```

ysSystem>600</WorkingDaysSystem><ContractType>0</ContractType><AttService><ServiceSequenceNbr>1</ServiceSequenceNbr><ServiceCode>1</ServiceCode><ServiceNbrDays>100</ServiceNbrDays></AttService><AttRemun><RemunSequenceNbr>1</RemunSequenceNbr><RemunCode>1</RemunCode><RemunAmount>1693</RemunAmount></AttRemun></AttOccupation></AttWorkerRecord></AttNaturalPerson></AttEmployerDeclaration></Attestation><Part><PageNbr>01</PageNbr><TotalPagesNbr>02</TotalPagesNbr></Part></A820>

Deel 2: Bepaalde blokken worden herhaald:

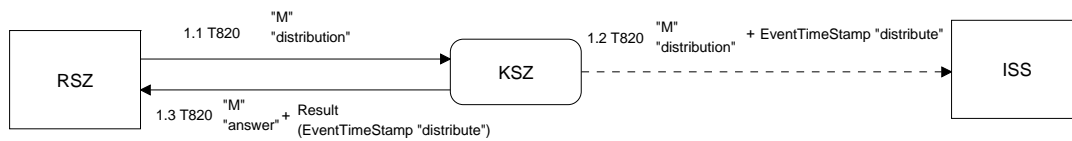
TAPEA101200000000000002115900901212345D0M53061421040A820 02/02
00000388DMFAA00000001100306130015 01000 2003010120030331 015<?xml
version="1.0" encoding="UTF-8"?><A820 xmlns="SchemaA820"
xmlns:xsi="http://www.w3.org/2001/XMLSchema-instance"
xsi:schemaLocation="SchemaA820 \\Devdisk\Relevés\Projects\DMFAAT~1\A820-
0001.xsd" version="0"
processType="M"><Identifier>DMFAA0000000110</Identifier><Attestation><Attestati
onIdentification>21159</AttestationIdentification><AttestationSituationNbr>21159</Att
estationSituationNbr><AttestationStatus>0</AttestationStatus><AttestationCreationDat
e>2003-06-
13</AttestationCreationDate><AttEmployerDeclaration><Quarter>20031</Quarter><N
LOSSRegistrationNbr>162843405</NLOSSRegistrationNbr><Trusteeship>0</Trusteesh
ip><NetOwedAmount>18554</NetOwedAmount><System5>0</System5><UserID>1081
</UserID><AttNaturalPerson><INSS>53061421040</INSS><OriolusValidationCode>0</
OriolusValidationCode><AttWorkerRecord><EmployerClass>017</EmployerClass><W
orkerCode>015</WorkerCode><NLOSSQuarterStartingDate>2003-01-
01</NLOSSQuarterStartingDate><NLOSSQuarterEndingDate>2003-03-
31</NLOSSQuarterEndingDate><Border>0</Border><AttOccupation><OccupationSeque
nceNbr>5</OccupationSequenceNbr><InternalOccupationNbr>31000038MN005</InternalOc
cupationNbr><OccupationStartingDate>2003-03-
30</OccupationStartingDate><OccupationEndingDate>2003-03-
30</OccupationEndingDate><JointCommissionNbr>302</JointCommissionNbr><WorkingDa
ysSystem>600</WorkingDaysSystem><ContractType>0</ContractType><AttService><Servi
ceSequenceNbr>1</ServiceSequenceNbr><ServiceCode>1</ServiceCode><ServiceNbrDays>
100</ServiceNbrDays></AttService><AttRemun><RemunSequenceNbr>1</RemunSequence
Nbr><RemunCode>1</RemunCode><RemunAmount>1693</RemunAmount></AttRemun><
/AttOccupation></AttWorkerRecord></AttNaturalPerson></AttEmployerDeclaration></Attest
ation><Part><PageNbr>02</PageNbr><TotalPagesNbr>02</TotalPagesNbr></Part></A
820>

1.6. Oriolusflag bij BIS-nummers (dummy-attesten)

1.6.1. Voorbeeld vlag van 1 naar 0 (enkel "il faut")

```
0000A102500104092100004875400902500767F0Mxxxxxxxxxxxx000000A820
00000001DMFAA000000104004092016050409211441001000
2004010120040331012000<?xml version="1.0" encoding="UTF-8"?><A820 version="0"
processType="M" xmlns="http://www.ksz-
bcss.fgov.be/XmlSchema"><Identifier>DMFAA0000001040</Identifier><Attestation><Atte
stationIdentification>2771636</AttestationIdentification><AttestationSituationNbr>0</Attes
tationSituationNbr><AttestationStatus>2</AttestationStatus><AttestationCreationDate>2004
-09-
17</AttestationCreationDate><SituationLink><PreviousSituationNbr>2771636</PreviousSit
uationNbr></SituationLink><AttEmployerDeclaration><Quarter>20041</Quarter><NLOSS
RegistrationNbr>xxxxxxxx</NLOSSRegistrationNbr><PLAIndicator>0</PLAIndicator><
Trusteeship>0</Trusteeship><NetOwedAmount>126680111</NetOwedAmount><System5
>0</System5><UserID>999998</UserID><AttNaturalPerson><INSS>xxxxxxxx</INSS
><OriolusValidationCode>0</OriolusValidationCode><AttWorkerRecord><EmployerClass
>77</EmployerClass><WorkerCode>15</WorkerCode><NLOSSQuarterStartingDate>2004
-01-01</NLOSSQuarterStartingDate><NLOSSQuarterEndingDate>2004-03-
31</NLOSSQuarterEndingDate><Border>0</Border><AttOccupation><OccupationSequenc
eNbr>1</OccupationSequenceNbr><InternalOccupationNbr>31000D1X0600B</InternalOcc
upationNbr><OccupationStartingDate>1981-03-
10</OccupationStartingDate><JointCommissionNbr>149.04</JointCommissionNbr><Worki
ngDaysSystem>500</WorkingDaysSystem><ContractType>0</ContractType><AttService>
<ServiceSequenceNbr>1</ServiceSequenceNbr><ServiceCode>1</ServiceCode><ServiceN
brDays>6300</ServiceNbrDays></AttService><AttService><ServiceSequenceNbr>2</Servi
ceSequenceNbr><ServiceCode>2</ServiceCode><ServiceNbrDays>200</ServiceNbrDays>
</AttService><AttRemun><RemunSequenceNbr>1</RemunSequenceNbr><RemunCode>1
</RemunCode><RemunAmount>570750</RemunAmount></AttRemun></AttOccupation>
</AttWorkerRecord></AttNaturalPerson></AttEmployerDeclaration></Attestation></A820
>
```

2. Totaalbericht T820, M



2.1. RSZ(PPO) maakt een bericht T820 M over aan KSZ

Volgende gegevens zijn aanwezig:

```

<!ELEMENT T820 (Identifier, Quarter, EventTimeStamp, Total)>
<!ATTLIST T820
  processType M #REQUIRED
  messagType distribution #REQUIRED>
<!ATTLIST EventTimeStamp
  event download #REQUIRED>
<!ATTLIST Total
  indicator 010000 #REQUIRED
  indicator 014000 #REQUIRED
  indicator 031000 #REQUIRED
  indicator 999999 #REQUIRED>
  
```

Voorbeeld

```

<?xml version="1.0" encoding="UTF-8" ?>
<- dmfa:T820 xmlns:dmfa="http://www.ksz-bcss.fgov.be/XmlSchema" xmlns:xsi="http://www.w3.org/2001/XMLSchema-
instance" xsi:schemaLocation="http://www.ksz-bcss.fgov.be/XmlSchema
\\Devdisk\Releves\Projects\DMFAAT-1\T820.xsd" dmfa:processType="M" messageType="distribution">
  <dmfa:Identifier>DMFAA0000001430</dmfa:Identifier>
  <dmfa:Quarter>20044</dmfa:Quarter>
  <dmfa:EventTimeStamp event="download">2005-09-23T09:45:18.000+01:00</dmfa:EventTimeStamp>
  <dmfa:Total indicator="010000">000001616922798</dmfa:Total>
  <dmfa:Total indicator="014000">000002770657456</dmfa:Total>
  <dmfa:Total indicator="031000">0000000000000000</dmfa:Total>
  <dmfa:Total indicator="999999">000002775621440</dmfa:Total>
</dmfa:T820>
  
```

2.2. KSZ maakt bericht T820 M over aan ISS

Enkel wanneer KSZ-controles van bericht T820 M geen problemen opleveren, wordt het bericht doorgestuurd naar de geïnteresseerde instellingen van sociale zekerheid.

KSZ voegt de timestamp van distributie toe.

```

<!ELEMENT T820 (Identifier, Quarter, EventTimeStamp, Total)>
<!ATTLIST T820
  processType M #REQUIRED
  messagType distribution #REQUIRED>
<!ATTLIST EventTimeStamp
  event download #REQUIRED
  event distribute #REQUIRED>
<!ATTLIST Total
  indicator 010000 #REQUIRED
  indicator 014000 #REQUIRED
  indicator 031000 #REQUIRED
  indicator 999999 #REQUIRED>
  
```

2.3. *KSZ antwoord aan RSZ(PPO)*

2.3.1. **Positief antwoord**

Een positief antwoord aan RSZ(PPO) houdt in dat bericht T820 M door KSZ doorgestuurd is naar de geïnteresseerde instellingen van sociale zekerheid. KSZ geeft de timestamp van distributie mee en het resultaat van verwerking.

```
<!ELEMENT T820 (Identifier, Quarter, EventTimeStamp, Total, Result)>
<!ELEMENT Result (Code, Explanation?)>
<!ATTLIST T820
  processType M #REQUIRED
  msgType answer #REQUIRED>
<!ATTLIST EventTimeStamp
  event download #REQUIRED
  event distribute #REQUIRED>
<!ATTLIST Total
  indicator 010000 #REQUIRED
  indicator 014000 #REQUIRED
  indicator 031000 #REQUIRED
  indicator 999999 #REQUIRED>
```

2.3.2. **Negatief antwoord**

Een negatief antwoord aan RSZ(PPO) houdt in dat bericht T820 M niet doorgestuurd is. KSZ voegt logischerwijs GEEN datum van distributie toe!

```
<!ELEMENT T820 (Identifier, Quarter, EventTimeStamp, Total, Result)>
<!ELEMENT Result (Code, Explanation?)>
<!ATTLIST T820
  processType M #REQUIRED
  msgType answer #REQUIRED>
<!ATTLIST EventTimeStamp
  event download #REQUIRED>
<!ATTLIST Total
  indicator 010000 #REQUIRED
  indicator 014000 #REQUIRED
  indicator 031000 #REQUIRED
  indicator 999999 #REQUIRED>
```

3. Consultatie A820, L

3.1. De vraag

Verschillende combinaties van vragen (Requestblokken) zijn mogelijk.

Rechtstreeks een bepaald attest opvragen (Het INSZ en het trimester moeten worden opgegeven als bijkomende controle).

1. RSZ en/of RSZPPO, on-line of batch, periode, INSZ, attestnummer, enkel laatste situatie
2. RSZ en/of RSZPPO, on-line of batch, periode, INSZ, attestnummer, alle situaties
3. RSZ en/of RSZPPO, on-line of batch, periode, INSZ, attestnummer, situatie-nummer (geeft opgegeven situatie)

Diverse selectiecriteria, de laatste situatie

4. RSZ en/of RSZPPO, on-line of batch, periode, INSZ, enkel de laatste situatie
5. RSZ en/of RSZPPO, on-line of batch, periode, INSZ, enkel de laatste situatie, inschrijvingsnummer werkgever
6. RSZ en/of RSZPPO, on-line of batch, periode, INSZ, enkel de laatste situatie, inschrijvingsnummer werkgever, werkgevercategorie
7. RSZ en/of RSZPPO, on-line of batch, periode, INSZ, enkel de laatste situatie, inschrijvingsnummer werkgever, werkgevercategorie, werknemerscategorie
8. RSZ en/of RSZPPO, online of batch, periode, INSZ, enkel de laatste situatie, inschrijvingsnummer werkgever, werknemerscategorie

Diverse selectiecriteria, alle situaties

9. RSZ en/of RSZPPO, on-line of batch, periode, INSZ, alle situaties
10. RSZ en/of RSZPPO, on-line of batch, periode, INSZ, alle situaties, inschrijvingsnummer werkgever
11. RSZ en/of RSZPPO, on-line of batch, periode, INSZ, alle situaties, inschrijvingsnummer werkgever, werkgevercategorie
12. RSZ en/of RSZPPO, on-line of batch, periode, INSZ, alle situaties, inschrijvingsnummer werkgever, werkgevercategorie, werknemerscategorie
13. RSZ en/of RSZPPO, online of batch, periode, INSZ, alle situaties, inschrijvingsnummer werkgever, werknemerscategorie

Er wordt on-line een vraag gesteld [Request]. In de vraag staat vermeld of ze onmiddellijk moet verwerkt worden (on line) of pas later (batch). In alle gevallen wordt de vraag steeds teruggestuurd met een resultaat-code [X001].

Als de vraag niet goed verwerkt is krijgen we een negatief antwoord. De vraag wordt teruggestuurd met de resultaat-code [Request] + [X001].

Als de vraag niet onmiddellijk moet verwerkt worden en goed ontvangen is, krijgen we een intermediair antwoord [Request] + [X001].

Als een attest gevonden wordt krijgen we een positief antwoord. Voor de consultatie A820 wordt dan een attest A820 meegestuurd [Attestation], eventueel met een verwijzing naar een ander attest dat voldoet aan de vraag [Next]. Als de aanvrager vervolgens dezelfde vraag

opnieuw stelt, samen met deze verwijzing ([Next]), dan wordt het volgende attest teruggestuurd dat voldoet aan deze vraag.

Als het attest te lang is, wordt het eerste deel teruggestuurd met een aanduiding dat het een deel-attest betreft [Request + Attestation + Part]. Als er bovendien nog een volgend attest is dat aan de vraag voldoet, zal er zowel een Part-blok als een Next-blok teruggestuurd worden [Request + Attestation + Part + Next]

Om het volgende deel te verkrijgen moet bij de vraag 'Part' gevoegd worden [Request + Part] met daarin welk deel opgevraagd wordt. Om dit deel terug te kunnen vinden hebben wij bovendien het 'AttestationSituationNbr' nodig. **Daarom moeten in de 'Request' bij het opvragen van een deel 'AttestationIdentification' en 'AttestationSituationNbr' ingevuld zijn !** Dit deel wordt dan opgezocht en onder de vorm van een deel-attest teruggestuurd. Om het XML-schema te respecteren mogen de velden 'NLOSSRegistrationNBR', 'CompanyID', 'EmployerClass' en 'WorkerCode' niet (meer) ingevuld zijn in 'Request' wanneer 'AttestationIdentification' ingevuld is. De andere gegevens uit het Request-blok worden gewoon overgenomen.

Voorbeeld zonder next:

Vraag	Antwoord
[Request]	→ [Request][Attestation][Part 1 van 3][X001]
[Request][Part 2 van 3]	→ [Request][Attestation][Part 2 van 3][X001]
[Request][Part 3 van 3]	→ [Request][Attestation][Part 3 van 3][X001]
[Request][Part 4 van 3]	→ [Request][Part 4 van 3][X001] (fout: deel niet gevonden)

Voorbeeld met next:

Vraag	Antwoord
[Request]	→ [Request][Attestation][Part 1 van 3][Next][X001]
[Request][Part 2 van 3]	→ [Request][Attestation][Part 2 van 3][Next][X001]
[Request][Part 3 van 3]	→ [Request][Attestation][Part 3 van 3][Next][X001]
[Request][Next]	→ [Request][Attestation][Part 1 van 3][X001] (dit volgende attest heeft ook meerdere delen, maar geen Next meer)
[Request][Part 1 van 3][Next]→	[Request][Part 1 van 3][Next][X001] (fout: een Part en een Next mogen niet samen opgevraagd worden).

Enkele toelichtingen bij de voorbeelden:

- Indien een vraag wordt gesteld met een Part dat verwijst naar een deel dat niet bestaat krijg je een foutief antwoord (deel niet gevonden).
- Als een volgend attest aan de vraag voldoet krijg je in elk deel-antwoord een Next.
- Als in de vraag zowel een 'Part' als een 'Next' staat, krijg je een foutief antwoord (Part en Next mogen niet samen opgevraagd worden).

3.2. Next

3.2.1. Vraag

```
DSORA1099000 ref int      xxxxxxxxxxxxO0LxxxxxxxxxxxxA820
L0117PA038647700501170926M03S00010019991018201502282004010120040630
<?xml version="1.0" encoding="UTF-
8"?><A820><Request><PeriodStart>20041</PeriodStart><PeriodEnd>20042</PeriodEnd><
WayOfAnswering>0</WayOfAnswering><WantedSituations>0</WantedSituations><PLAInd
icator>0</PLAIndicator><INSS>xxxxxxxxxxxx</INSS><NLOSSRegistrationNbr></NLOSSR
egistrationNbr><CompanyID></CompanyID><EmployerClass></EmployerClass><WorkerCo
de></WorkerCode></Request><Next><Quarter>20041</Quarter><NPPID>3802664</NPPID
><WRVersionNbr>221080621</WRVersionNbr></Next></A820>
```

3.2.2. Antwoord

Het bijhorende antwoord:

```
0000A1099000 ref int      xxxxxxxxxxxxF0Lxxxxxxxxxxxx000000A8200005
L0117PA0386477305011709240501170927A010002004010120040630200401012004063001
2000<?xml version="1.0" encoding="UTF-8"?><A820 xmlns="http://www.ksz-
bcss.fgov.be/XmlSchema" xmlns:xsi="http://www.w3.org/2001/XMLSchema-instance"
xsi:schemaLocation="http://www.ksz-bcss.fgov.be/XmlSchema
\\Devdisk\Relevés\Projects\DMFAAT~1\A820-0001.xsd" version="001"
processType="L"><Request><INSS>xxxxxxxxxxxx</INSS><PeriodStart>20041</PeriodStart
><PeriodEnd>20042</PeriodEnd><WayOfAnswering>0</WayOfAnswering><WantedSituati
ons>0</WantedSituations></Request><Attestation><AttestationIdentification>221080621</A
ttestationIdentification><AttestationSituationNbr>221080621</AttestationSituationNbr><Atte
stationStatus>0</AttestationStatus><AttestationCreationDate>2004-05-
16</AttestationCreationDate><AttEmployerDeclaration><Quarter>20041</Quarter><NLOSS
RegistrationNbr>xxxxxxxx</NLOSSRegistrationNbr><PLAIndicator>0</PLAIndicator><Tr
usteeship>0</Trusteeship><NetOwedAmount>241164</NetOwedAmount><System5>0</Syst
em5><UserID>1081</UserID><AttNaturalPerson><INSS>xxxxxxxxxxxx</INSS><OriolusVal
idationCode>0</OriolusValidationCode><AttWorkerRecord><EmployerClass>000</Employe
rClass><WorkerCode>495</WorkerCode><NLOSSQuarterStartingDate>2004-01-
01</NLOSSQuarterStartingDate><NLOSSQuarterEndingDate>2004-03-
31</NLOSSQuarterEndingDate><Border>0</Border><AttOccupation><OccupationSequence
Nbr>1</OccupationSequenceNbr><InternalOccupationNbr>31000AKFDD00E</InternalOccu
pationNbr><OccupationStartingDate>2004-02-
26</OccupationStartingDate><JointCommissionNbr>209</JointCommissionNbr><WorkingD
aysSystem>500</WorkingDaysSystem><ContractType>1</ContractType><RefMeanWorking
Hours>3800</RefMeanWorkingHours><MeanWorkingHours>1900</MeanWorkingHours><
AttService><ServiceSequenceNbr>1</ServiceSequenceNbr><ServiceCode>1</ServiceCode>
<ServiceNbrDays>2500</ServiceNbrDays><ServiceNbrHours>10400</ServiceNbrHours></A
ttService><AttRemun><RemunSequenceNbr>1</RemunSequenceNbr><RemunCode>1</Re
munCode><RemunAmount>110133</RemunAmount></AttRemun></AttOccupation></AttW
orkerRecord></AttNaturalPerson></AttEmployerDeclaration></Attestation><Next><Quarter>
20042</Quarter><NPPID>3802664</NPPID><WRVersionNbr>283884959</WRVersionNbr
></Next><X001><CompleteResult><OriginalMessageIdentification>0</OriginalMessageIden
tification><Result><ReturnCode>000000</ReturnCode><Codelist>820</Codelist></Result><
/CompleteResult></X001></A820>
```

3.3. Part

3.3.1. Vraag

```
X25PA1099000          xxxxxxxxxxxxO0LxxxxxxxxxxxxA820
0308071145M03S 1010020030101200303312003010120030331    <?xml version="1.0"
encoding="UTF-8"?><A820 xmlns="SchemaA820"
xmlns:xsi="http://www.w3.org/2001/XMLSchema-instance"
xsi:schemaLocation="SchemaA820
\\Devdisk\Relevés\Projects\DMFAAT~1\31DECE~1\XML-A820\A820-0001.xsd" version="0"
processType="L"><Request><INSS>xxxxxxxxxxx</INSS><PeriodStart>20031</PeriodStart
><PeriodEnd>20031</PeriodEnd><WayOfAnswering>0</WayOfAnswering><WantedSituati
ons>0</WantedSituations><AttestationIdentification>1034817</AttestationIdentification><At
testationSituationNbr>1066685</AttestationSituationNbr></Request><Part><PageNbr>2</Pa
geNbr><TotalPagesNbr>2</TotalPagesNbr></A820>
```

3.3.2. Antwoord

Het bijhorende antwoord:

```
0000A1099000          xxxxxxxxxxxxF0Lxxxxxxxxxxxx000000A8200005
L0201TY0000005305020110040502011007A010002003010120030331200301012003033101
2000<?xml version="1.0" encoding="UTF-8"?><A820 xmlns="http://www.ksz-
bcss.fgov.be/XmlSchema" xmlns:xsi="http://www.w3.org/2001/XMLSchema-instance"
xsi:schemaLocation="http://www.ksz-bcss.fgov.be/XmlSchema
\\Devdisk\Relevés\Projects\DMFAAT~1\A820-0001.xsd" version="001"
processType="L"><Request><INSS>xxxxxxxxxxx</INSS><PeriodStart>20031</PeriodStart
><PeriodEnd>20031</PeriodEnd><WayOfAnswering>0</WayOfAnswering><WantedSituati
ons>0</WantedSituations><AttestationIdentification>1034817</AttestationIdentification><At
testationSituationNbr>1066685</AttestationSituationNbr></Request><Attestation><Attestatio
nIdentification>1034817</AttestationIdentification><AttestationSituationNbr>1066685</Attes
tationSituationNbr><AttestationStatus>1</AttestationStatus><AttestationCreationDate>2004-
02-
16</AttestationCreationDate><SituationLink><PreviousSituationNbr>1034817</PreviousSitu
ationNbr></SituationLink><AttEmployerDeclaration><Quarter>20031</Quarter><NLOSSRe
gistrationNbr>xxxxxxx</NLOSSRegistrationNbr><PLAIndicator>1</PLAIndicator><Truste
eship>0</Trusteeship><CompanyID>xxxxxxx</CompanyID><NetOwedAmount>0</NetO
wedAmount><System5>0</System5><UserID>7613</UserID><AttNaturalPerson><INSS>xx
xxxxxxxx</INSS><OriolusValidationCode>0</OriolusValidationCode><AttWorkerRecord>
<EmployerClass>097</EmployerClass><WorkerCode>015</WorkerCode><NLOSSQuarterSt
artingDate>2003-01-01</NLOSSQuarterStartingDate><NLOSSQuarterEndingDate>2003-03-
29</NLOSSQuarterEndingDate><Border>0</Border><AttOccupation><OccupationSequence
Nbr>37</OccupationSequenceNbr><InternalOccupationNbr>3100000CTP00K</InternalOccu
pationNbr><OccupationStartingDate>2003-02-
15</OccupationStartingDate><OccupationEndingDate>2003-02-
15</OccupationEndingDate><JointCommissionNbr>322</JointCommissionNbr><WorkingDa
ysSystem>600</WorkingDaysSystem><ContractType>0</ContractType><RefMeanWorking
Hours>3600</RefMeanWorkingHours><MeanWorkingHours>4000</MeanWorkingHours><
AttService><ServiceSequenceNbr>1</ServiceSequenceNbr><ServiceCode>1</ServiceCode>
<ServiceNbrDays>50</ServiceNbrDays><ServiceNbrHours>400</ServiceNbrHours></AttSer
vice><AttService><ServiceSequenceNbr>2</ServiceSequenceNbr><ServiceCode>30</Servic
eCode><ServiceNbrDays>50</ServiceNbrDays><ServiceNbrHours>200</ServiceNbrHours>
```


Service></AttOccupation></AttWorkerRecord></AttNaturalPerson></AttEmployerDeclaration></Attestation><Part><PageNbr>2</PageNbr><TotalPagesNbr>2</TotalPagesNbr></Part><X001><CompleteResult><OriginalMessageIdentification>0</OriginalMessageIdentification><Result><ReturnCode>000000</ReturnCode><Codelist>820</Codelist></Result></CompleteResult></X001></A820>

3.4. Attest met anomalieën

Antwoord voor sector 099:

```
0000A1099000eigeninternerefxxxxxxxxxxxFLxxxxxxxxxxx000000A8200005
L0117PA0440816305011711130501171116A010002003040120040930200309012003123101
2000<?xml version="1.0" encoding="UTF-8"?><A820 xmlns="http://www.ksz-
bcss.fgov.be/XmlSchema" xmlns:xsi="http://www.w3.org/2001/XMLSchema-instance"
xsi:schemaLocation="http://www.ksz-bcss.fgov.be/XmlSchema
\\Devdisk\Relevés\Projects\DMFAAT~1\A820-0001.xsd" version="001"
processType="L"><Request><INSS>xxxxxxxxxxx</INSS><PeriodStart>20033</PeriodStart
><PeriodEnd>20034</PeriodEnd><WayOfAnswering>0</WayOfAnswering><WantedSituati
ons>0</WantedSituations></Request><Attestation><AttestationIdentification>167165236</A
ttestationIdentification><AttestationSituationNbr>167165236</AttestationSituationNbr><Atte
stationStatus>0</AttestationStatus><AttestationCreationDate>2004-03-
31</AttestationCreationDate><AttEmployerDeclaration><Quarter>20034</Quarter><NLOSS
RegistrationNbr>xxxxxxxxxx</NLOSSRegistrationNbr><PLAIndicator>0</PLAIndicator><Tr
usteeship>0</Trusteeship><NetOwedAmount>157685557</NetOwedAmount><System5>0</
System5><HolidayStartingDate>2004-04-
01</HolidayStartingDate><VersionNbr>167174094</VersionNbr><UserID>1015</UserID><
AttNaturalPerson><INSS>xxxxxxxxxxx</INSS><OriolusValidationCode>0</OriolusValidati
onCode><AttWorkerRecord><EmployerClass>097</EmployerClass><WorkerCode>015</W
orkerCode><NLOSSQuarterStartingDate>2003-09-
29</NLOSSQuarterStartingDate><NLOSSQuarterEndingDate>2003-12-
31</NLOSSQuarterEndingDate><Border>0</Border><LocalUnitId>73107</LocalUnitId><A
ttOccupation><OccupationSequenceNbr>1</OccupationSequenceNbr><InternalOccupationNbr
r>310003VXV100F</InternalOccupationNbr><OccupationStartingDate>2003-09-
11</OccupationStartingDate><OccupationEndingDate>2003-12-
31</OccupationEndingDate><JointCommissionNbr>322</JointCommissionNbr><WorkingDa
ysSystem>500</WorkingDaysSystem><ContractType>0</ContractType><RefMeanWorking
Hours>3800</RefMeanWorkingHours><MeanWorkingHours>3800</MeanWorkingHours><
AttService><ServiceSequenceNbr>1</ServiceSequenceNbr><ServiceCode>1</ServiceCode>
<ServiceNbrDays>6650</ServiceNbrDays><ServiceNbrHours>26400</ServiceNbrHours></A
ttService><AttService><ServiceSequenceNbr>2</ServiceSequenceNbr><ServiceCode>2</Ser
viceCode><ServiceNbrDays>50</ServiceNbrDays><ServiceNbrHours>400</ServiceNbrHour
s></AttService><AttRemun><RemunSequenceNbr>1</RemunSequenceNbr><RemunCode>1
</RemunCode><RemunAmount>246583</RemunAmount></AttRemun></AttOccupation></
AttWorkerRecord></AttNaturalPerson></AttEmployerDeclaration><AttAnomaly><BlockNbr
>90007</BlockNbr><FieldNbr>17</FieldNbr><AnomalyNbr>8</AnomalyNbr><AnomalySta
tus>1</AnomalyStatus><VersionNbr>167174094</VersionNbr><AnomalyCreationDate>200
4-03-
31</AnomalyCreationDate></AttAnomaly></Attestation><X001><CompleteResult><Origina
lMessageIdentification>0</OriginalMessageIdentification><Result><ReturnCode>000000</R
eturnCode><Codelist>820</Codelist></Result></CompleteResult></X001></A820>
```

3.5. *Attest in verschillende variantes*

Hier volgen enkele verschillende varianten van verschillende attesten. Elke variatie staat voor een verschillende filter van het totale A820-bericht. Deze variatie wordt bepaald per type instelling (primair, secundair,...) op basis van de machtiging die verleend wordt door het Sectoraal Comité van de Sociale Zekerheid en van de Gezondheid.

3.5.1. **Antwoord met variante 0002**

```
0000A1095001          xxxxxxxxxxxxFOxxxxxxxxxxxx000000A8200002
L0131PA0015694305013111380501311140A010002001010120040930200307012003093001
2000<?xml version="1.0" encoding="UTF-8"?><A820 xmlns="http://www.ksz-
bcss.fgov.be/XmlSchema" xmlns:xsi="http://www.w3.org/2001/XMLSchema-instance"
xsi:schemaLocation="http://www.ksz-bcss.fgov.be/XmlSchema
\\Devdisk\Relevés\Projects\DMFAAT~1\A820-0001.xsd" version="001"
processType="L"><Request><INSS>xxxxxxxxxxx</INSS><PeriodStart>20033</PeriodStart
><PeriodEnd>20033</PeriodEnd><WayOfAnswering>0</WayOfAnswering><WantedSituati
ons>0</WantedSituations></Request><Attestation><AttestationIdentification>52641150</Att
estationIdentification><AttestationSituationNbr>52641150</AttestationSituationNbr><Attesta
tionStatus>0</AttestationStatus><AttestationCreationDate>2003-11-
23</AttestationCreationDate><AttEmployerDeclaration><Quarter>20033</Quarter><NLOSS
RegistrationNbr>xxxxxxxxx</NLOSSRegistrationNbr><PLAIndicator>1</PLAIndicator><Tr
usteeship>0</Trusteeship><CompanyID>xxxxxxxxx</CompanyID><NetOwedAmount>1115
7958</NetOwedAmount><System5>0</System5><UserID>1037</UserID><AttNaturalPerso
n><INSS>xxxxxxxxxxx</INSS><OriolusValidationCode>0</OriolusValidationCode><AttW
orkerRecord><EmployerClass>083</EmployerClass><WorkerCode>015</WorkerCode><NL
OSSQuarterStartingDate>2003-07-
01</NLOSSQuarterStartingDate><NLOSSQuarterEndingDate>2003-09-
30</NLOSSQuarterEndingDate><Border>0</Border><AttOccupation><OccupationSequence
Nbr>1</OccupationSequenceNbr><InternalOccupationNbr>310000K50Y00B</InternalOccup
ationNbr><OccupationStartingDate>2002-09-
17</OccupationStartingDate><JointCommissionNbr>140</JointCommissionNbr><WorkingD
aysSystem>500</WorkingDaysSystem><ContractType>0</ContractType><AttService><Serv
iceSequenceNbr>1</ServiceSequenceNbr><ServiceCode>1</ServiceCode><ServiceNbrDays
>6400</ServiceNbrDays></AttService><AttService><ServiceSequenceNbr>2</ServiceSeque
nceNbr><ServiceCode>11</ServiceCode><ServiceNbrDays>100</ServiceNbrDays></AttSer
vice><AttService><ServiceSequenceNbr>3</ServiceSequenceNbr><ServiceCode>23</Servic
eCode><ServiceNbrDays>100</ServiceNbrDays></AttService><AttRemun><RemunSequenc
eNbr>1</RemunSequenceNbr><RemunCode>1</RemunCode><RemunAmount>522432</Re
munAmount></AttRemun></AttOccupation></AttWorkerRecord></AttNaturalPerson></AttE
mployerDeclaration></Attestation><Next><Quarter>20033</Quarter><NPPID>413161</NPP
ID><WRVersionNbr>99585674</WRVersionNbr></Next><X001><CompleteResult><Origin
alMessageIdentification>0</OriginalMessageIdentification><Result><ReturnCode>000000</
ReturnCode><Codelist>820</Codelist></Result></CompleteResult></X001></A820>
```


3.5.2. Antwoord met variante 0006

```
0000A1096000          xxxxxxxxxxxxFLxxxxxxxxxxxx000000A8200006
L0131PA0281158305013113260501311329A010002002040120040930200404012004063001
2000<?xml version="1.0" encoding="UTF-8"?><A820 xmlns="http://www.ksz-
bcss.fgov.be/XmlSchema" xmlns:xsi="http://www.w3.org/2001/XMLSchema-instance"
xsi:schemaLocation="http://www.ksz-bcss.fgov.be/XmlSchema
\\Devdisk\Relevés\Projects\DMFAAT~1\A820-0001.xsd" version="001"
processType="L"><Request><INSS>xxxxxxxxxxx</INSS><PeriodStart>20042</PeriodStart
><PeriodEnd>20042</PeriodEnd><WayOfAnswering>0</WayOfAnswering><WantedSituati
ons>0</WantedSituations><AttestationIdentification>308594834</AttestationIdentification><
AttestationSituationNbr>308594834</AttestationSituationNbr></Request><Attestation><Atte
stationIdentification>308594834</AttestationIdentification><AttestationSituationNbr>308594
834</AttestationSituationNbr><AttestationStatus>0</AttestationStatus><AttestationCreationD
ate>2004-09-
09</AttestationCreationDate><AttEmployerDeclaration><Quarter>20042</Quarter><NLOSS
RegistrationNbr>xxxxxxxx</NLOSSRegistrationNbr><PLAIndicator>1</PLAIndicator><Tr
usteeship>0</Trusteeship><NetOwedAmount>108605913</NetOwedAmount><System5>0</
System5><UserID>1025</UserID><AttNaturalPerson><INSS>xxxxxxxxxxx</INSS><Oriolu
sValidationCode>0</OriolusValidationCode><AttWorkerRecord><EmployerClass>027</Emp
loyerClass><WorkerCode>015</WorkerCode><NLOSSQuarterStartingDate>2004-04-
01</NLOSSQuarterStartingDate><NLOSSQuarterEndingDate>2004-06-
30</NLOSSQuarterEndingDate><Border>0</Border><AttIndemnityWAPM><IndemnityNatu
re>1</IndemnityNature><IncapacityDegree>100,00</IncapacityDegree><IndemnityAmount>
378821</IndemnityAmount></AttIndemnityWAPM></AttWorkerRecord></AttNaturalPerson
></AttEmployerDeclaration></Attestation><X001><CompleteResult><OriginalMessageIdenti
fication>0</OriginalMessageIdentification><Result><ReturnCode>000000</ReturnCode><C
odelist>820</Codelist></Result></CompleteResult></X001></A820>
```

3.5.3. Antwoord met variante 0008

```
0000A1097000          xxxxxxxxxxxxFOlxxxxxxxxxxxx000000A8200008
L0131PA0020460305013111530501311155A010001998010120041231200401012004033101
2000<?xml version="1.0" encoding="UTF-8"?><A820 xmlns="http://www.ksz-
bcss.fgov.be/XmlSchema" xmlns:xsi="http://www.w3.org/2001/XMLSchema-instance"
xsi:schemaLocation="http://www.ksz-bcss.fgov.be/XmlSchema
\\Devdisk\Relevés\Projects\DMFAAT~1\A820-0001.xsd" version="001"
processType="L"><Request><INSS>xxxxxxxxxxx</INSS><PeriodStart>20041</PeriodStart
><PeriodEnd>20041</PeriodEnd><WayOfAnswering>0</WayOfAnswering><WantedSituati
ons>1</WantedSituations></Request><Attestation><AttestationIdentification>189553378</A
ttestationIdentification><AttestationSituationNbr>189553378</AttestationSituationNbr><Atte
stationStatus>0</AttestationStatus><AttestationCreationDate>2004-04-
27</AttestationCreationDate><AttEmployerDeclaration><Quarter>20041</Quarter><NLOSS
RegistrationNbr>xxxxxxxx</NLOSSRegistrationNbr><PLAIndicator>1</PLAIndicator><Tru
steeship>0</Trusteeship><CompanyID>xxxxxxxx</CompanyID><NetOwedAmount>0</Net
OwedAmount><System5>0</System5><UserID>1025</UserID><AttNaturalPerson><INSS>
xxxxxxxxxxx</INSS><OriolusValidationCode>0</OriolusValidationCode><AttWorkerRecor
d><EmployerClass>024</EmployerClass><WorkerCode>015</WorkerCode><NLOSSQuarte
rStartingDate>2004-01-01</NLOSSQuarterStartingDate><NLOSSQuarterEndingDate>2004-
03-
31</NLOSSQuarterEndingDate><Border>0</Border><AttOccupation><OccupationSequence
Nbr>1</OccupationSequenceNbr><InternalOccupationNbr>310000BWL009</InternalOccu
pationNbr><OccupationStartingDate>1998-05-
04</OccupationStartingDate><JointCommissionNbr>124</JointCommissionNbr><WorkingD
aysSystem>500</WorkingDaysSystem><ContractType>0</ContractType><AttService><Serv
iceSequenceNbr>1</ServiceSequenceNbr><ServiceCode>1</ServiceCode><ServiceNbrDays
>4000</ServiceNbrDays></AttService><AttService><ServiceSequenceNbr>2</ServiceSeque
nceNbr><ServiceCode>12</ServiceCode><ServiceNbrDays>100</ServiceNbrDays></AttSer
vice><AttService><ServiceSequenceNbr>3</ServiceSequenceNbr><ServiceCode>72</Servic
eCode><ServiceNbrDays>2400</ServiceNbrDays></AttService><AttRemun><RemunSequen
ceNbr>1</RemunSequenceNbr><RemunCode>1</RemunCode><RemunAmount>392768</R
emunAmount></AttRemun></AttOccupation></AttWorkerRecord></AttNaturalPerson></Att
EmployerDeclaration></Attestation><X001><CompleteResult><OriginalMessageIdentificatio
n>0</OriginalMessageIdentification><Result><ReturnCode>000000</ReturnCode><Codelist
>820</Codelist></Result></CompleteResult></X001></A820>
```


3.6. X001 en Localization (semi online)

3.6.1. Positief antwoord

online (tussentijds antwoord):

```
<Request>...</Request><X001><CompleteResult><OriginalMessageIdentification>0</OriginalMessageIdentification><Result><ReturnCode>000001</ReturnCode><Codelist>820</Codelist></Result></ CompleteResult></X001></A820>
```

batch (definitief antwoord attest 4 van 5):

```
<Request>...</Request><Attestation>...</Attestation><Localization><SequenceNbr>4</SequenceNbr><TotalRecordsNbr>5</TotalRecordsNbr></Localization><X001><CompleteResult><OriginalMessageIdentification>0</OriginalMessageIdentification><Result><ReturnCode>000000</ReturnCode><Codelist>820</Codelist></Result></CompleteResult></X001></A820>
```

3.6.2. Negatief antwoord

online (definitief antwoord):

```
<Request>...</Request><X001><CompleteResult><OriginalMessageIdentification>0</OriginalMessageIdentification><Result><ReturnCode>010005</ReturnCode><Codelist>820</Codelist></Result></ CompleteResult></X001></A820>
```

batch (na een positief tussentijds antwoord):

```
<Request>...</Request><X001><CompleteResult><OriginalMessageIdentification>0</OriginalMessageIdentification><Result><ReturnCode>040701</ReturnCode><Codelist>820</Codelist></Result><Extradata>10000000221</Extradata></CompleteResult></X001></A820>
```

4. Consultaties L822

4.1. Vraag

Verschillende combinaties van vragen (Requestblokken) zijn mogelijk.

Op basis van INSZ, de laatste situatie

1. RSZ en/of RSZPPO, on-line of batch, periode, INSZ, enkel laatste situatie
2. RSZ en/of RSZPPO, on-line of batch, periode, INSZ, inschrijvingsnummer werkgever, enkel laatste situatie
3. RSZ en/of RSZPPO, on-line of batch, periode, INSZ, inschrijvingsnummer werkgever, werkgevercategorie, enkel laatste situatie
4. RSZ en/of RSZPPO, on-line of batch, periode, INSZ, inschrijvingsnummer werkgever, werkgevercategorie, werknemerscategorie, enkel laatste situatie
5. RSZ en/of RSZPPO, online of batch, periode, INSZ, inschrijvingsnummer werkgever, werknemerscategorie, enkel laatste situatie

Op basis van INSZ, alle situaties

6. RSZ en/of RSZPPO, on-line of batch, periode, INSZ, alle situaties
7. RSZ en/of RSZPPO, on-line of batch, periode, INSZ, inschrijvingsnummer werkgever, alle situaties
8. RSZ en/of RSZPPO, on-line of batch, periode, INSZ, inschrijvingsnummer werkgever, werkgevercategorie, alle situaties
9. RSZ en/of RSZPPO, on-line of batch, periode, INSZ, inschrijvingsnummer werkgever, werkgevercategorie, werknemerscategorie, alle situaties
10. RSZ en/of RSZPPO, online of batch, periode, INSZ, inschrijvingsnummer werkgever, werknemerscategorie, alle situaties

Op basis van Inschrijvingsnummer werkgever, de laatste situatie

11. RSZ en/of RSZPPO, on-line of batch, periode, inschrijvingsnummer werkgever, enkel laatste situatie
12. RSZ en/of RSZPPO, on-line of batch, periode, inschrijvingsnummer werkgever, werkgevercategorie, enkel laatste situatie
13. RSZ en/of RSZPPO, on-line of batch, periode, inschrijvingsnummer werkgever, werkgevercategorie, werknemerscategorie, enkel laatste situatie
14. RSZ en/of RSZPPO, online of batch, periode, inschrijvingsnummer werkgever, werknemerscategorie, enkel laatste situatie

Op basis van Inschrijvingsnummer werkgever, alle situaties

15. RSZ en/of RSZPPO, on-line of batch, periode, inschrijvingsnummer werkgever, alle situaties
16. RSZ en/of RSZPPO, on-line of batch, periode, inschrijvingsnummer werkgever, werkgevercategorie, alle situaties
17. RSZ en/of RSZPPO, on-line of batch, periode, inschrijvingsnummer werkgever, werkgevercategorie, werknemerscategorie, alle situaties
18. RSZ en/of RSZPPO, online of batch, periode, inschrijvingsnummer werkgever, werknemerscategorie, alle situaties

4.2. Antwoord

Indien men 2 personeelslijsten zou hebben met telkens 4 attesten binnen elke personeelslijst, dan ziet de structuur van het desbetreffende deel van het bericht er als volgt uit:

```
<PersonnelList>
  <Quarter>20031</Quarter>
  <NLOSSRegistrationNbr>199999934</NLOSSRegistrationNbr>
  <CompanyID>999999999</CompanyID>
  <PLAIndicator>1</PLAIndicator>
  <Trusteeship>1</Trusteeship>
  <WorkerCode>999</WorkerCode>
  <EmployerClass>999</EmployerClass>
  <AttestationList>
    <INSS>0</INSS>
    <OriolusValidationCode>1</OriolusValidationCode>
    <AttestationIdentification>9999999999</AttestationIdentification>
    <AttestationSituationNbr>9999999999</AttestationSituationNbr>
    <AttestationStatus>4</AttestationStatus>
    <AttestationCreationDate>1967-08-13</AttestationCreationDate>
  </AttestationList>
  <AttestationList>
    <INSS>0</INSS>
    <OriolusValidationCode>1</OriolusValidationCode>
    <AttestationIdentification>9999999999</AttestationIdentification>
    <AttestationSituationNbr>9999999999</AttestationSituationNbr>
    <AttestationStatus>4</AttestationStatus>
    <AttestationCreationDate>1967-08-13</AttestationCreationDate>
  </AttestationList>
  <AttestationList>
    <INSS>0</INSS>
    <OriolusValidationCode>1</OriolusValidationCode>
    <AttestationIdentification>9999999999</AttestationIdentification>
    <AttestationSituationNbr>9999999999</AttestationSituationNbr>
    <AttestationStatus>4</AttestationStatus>
    <AttestationCreationDate>1967-08-13</AttestationCreationDate>
  </AttestationList>
  <AttestationList>
    <INSS>0</INSS>
    <OriolusValidationCode>1</OriolusValidationCode>
    <AttestationIdentification>9999999999</AttestationIdentification>
    <AttestationSituationNbr>9999999999</AttestationSituationNbr>
    <AttestationStatus>4</AttestationStatus>
    <AttestationCreationDate>1967-08-13</AttestationCreationDate>
  </AttestationList>
</PersonnelList>
<PersonnelList>
  <Quarter>20031</Quarter>
  <NLOSSRegistrationNbr>199999934</NLOSSRegistrationNbr>
  <CompanyID>999999999</CompanyID>
  <PLAIndicator>1</PLAIndicator>
  <Trusteeship>1</Trusteeship>
  <WorkerCode>999</WorkerCode>
  <EmployerClass>999</EmployerClass>
  <AttestationList>
    <INSS>0</INSS>
    <OriolusValidationCode>1</OriolusValidationCode>
    <AttestationIdentification>9999999999</AttestationIdentification>
    <AttestationSituationNbr>9999999999</AttestationSituationNbr>
```

```

    <AttestationStatus>4</AttestationStatus>
    <AttestationCreationDate>1967-08-13</AttestationCreationDate>
  </AttestationList>
  <AttestationList>
    <INSS>0</INSS>
    <OriolusValidationCode>1</OriolusValidationCode>
    <AttestationIdentification>9999999999</AttestationIdentification>
    <AttestationSituationNbr>9999999999</AttestationSituationNbr>
    <AttestationStatus>4</AttestationStatus>
    <AttestationCreationDate>1967-08-13</AttestationCreationDate>
  </AttestationList>
  <AttestationList>
    <INSS>0</INSS>
    <OriolusValidationCode>1</OriolusValidationCode>
    <AttestationIdentification>9999999999</AttestationIdentification>
    <AttestationSituationNbr>9999999999</AttestationSituationNbr>
    <AttestationStatus>4</AttestationStatus>
    <AttestationCreationDate>1967-08-13</AttestationCreationDate>
  </AttestationList>
  <AttestationList>
    <INSS>0</INSS>
    <OriolusValidationCode>1</OriolusValidationCode>
    <AttestationIdentification>9999999999</AttestationIdentification>
    <AttestationSituationNbr>9999999999</AttestationSituationNbr>
    <AttestationStatus>4</AttestationStatus>
    <AttestationCreationDate>1967-08-13</AttestationCreationDate>
  </AttestationList>
</PersonnelList>

```

Deze gegevens die de personeelslijst identificeren (Quarter, NLOSSRegistrationNbr, enz...) worden, slechts 1 maal gegeven en vervolgens kunnen tot maximaal 80 attestreferenties volgen. Er is voorzien per record een maximum aan gegevens door te geven. Dit kan dus zowel één personeelslijst zijn met 80 attestreferenties, als 40 personeelslijsten met elk 1 attestreferentie. Het is wel zo dat elk record één volledig en coherent bericht bevat.

Met andere woorden: het bericht zal NIET midden in een tag en NIET midden een gegevensveld worden afgebroken. Het gegevensgedeelte zal steeds een volledig en coherent XML-bericht zijn.

Voorbeeld van een L822 XML-bericht (Online)

Prefix:

```

0000A102500020050100000091900902101483F0L49112106226000000L8220004
00000000588829206060709430710170914A00100      2005010120051231012000

```

XML:

```

<?xml version="1.0" encoding="UTF-8" ?>
- <L822 xmlns="http://www.ksz-bcss.fgov.be/XmlSchema" xmlns:xsi="http://www.w3.org/2001/XMLSchema-instance"
  xsi:schemaLocation="http://www.ksz-bcss.fgov.be/XmlSchema \\Devdisk\Relevés\Projects\DMFAAT~1\L820-0001.xsd"
  version="0" processType="L">
- <Request>
  <PeriodStart>20051</PeriodStart>
  <PeriodEnd>20051</PeriodEnd>
  <WayOfAnswering>0</WayOfAnswering>
  <WantedSituations>0</WantedSituations>
  <INSS>49112106226</INSS>
  <NLOSSRegistrationNbr>118914239</NLOSSRegistrationNbr>
  <PLAIndicator>0</PLAIndicator>
</Request>
- <PersonnelList>

```

```

<Quarter>20051</Quarter>
<NLOSSRegistrationNbr>118914239</NLOSSRegistrationNbr>
<PLAIndicator>1</PLAIndicator>
<Trusteeship>0</Trusteeship>
<WorkerCode>015</WorkerCode>
<EmployerClass>432</EmployerClass>
- <AttestationList>
  <INSS>49112106226</INSS>
  <OriolusValidationCode>0</OriolusValidationCode>
  <AttestationIdentification>5888292</AttestationIdentification>
  <AttestationSituationNbr>5888292</AttestationSituationNbr>
  <AttestationStatus>0</AttestationStatus>
  <AttestationCreationDate>2005-04-25</AttestationCreationDate>
</AttestationList>
- <AttestationList>
  <INSS>49112106226</INSS>
  <OriolusValidationCode>0</OriolusValidationCode>
  <AttestationIdentification>6001683</AttestationIdentification>
  <AttestationSituationNbr>6001683</AttestationSituationNbr>
  <AttestationStatus>0</AttestationStatus>
  <AttestationCreationDate>2005-04-26</AttestationCreationDate>
</AttestationList>
</PersonnelList>
- <X001>
- <CompleteResult>
  <OriginalMessageIdentification>0</OriginalMessageIdentification>
- <Result>
  <ReturnCode>000000</ReturnCode>
  <Codelist>820</Codelist>
</Result>
</CompleteResult>
</X001>
</L822>

```

Voorbeeld van een L822 XML-bericht (Semi-online)

Prefix:

```

0000A102500000214PA0758233100902500173F0L610613103540000000L822
0000477300000000000000008021412010802150356A0100019900101200712312006010120061231012000

```

XML:

```

<?xml version="1.0" encoding="UTF-8" ?>
<L822 xmlns="http://www.ksz-bcss.fgov.be/XmlSchema" xmlns:xsi="http://www.w3.org/2001/XMLSchema-instance"
  xsi:schemaLocation="http://www.ksz-bcss.fgov.be/XmlSchema \\Devdisk\Relevés\Projects\DMFAAT~1\L820-0001.xsd"
  version="0" processType="L">
  <Request>
    <PeriodStart>20061</PeriodStart>
    <PeriodEnd>20064</PeriodEnd>
    <WayOfAnswering>1</WayOfAnswering>
    <WantedSituations>0</WantedSituations>
    <INSS>61061310354</INSS>
  </Request>
  <PersonnelList>
    <Quarter>20061</Quarter>
    <NLOSSRegistrationNbr>60040067</NLOSSRegistrationNbr>
    <PLAIndicator>1</PLAIndicator>
    <Trusteeship>0</Trusteeship>
    <WorkerCode>495</WorkerCode>
    <EmployerClass>001</EmployerClass>
  <AttestationList>
    <INSS>61061310354</INSS>
    <OriolusValidationCode>0</OriolusValidationCode>
    <AttestationIdentification>737832098</AttestationIdentification>
    <AttestationSituationNbr>737832098</AttestationSituationNbr>
    <AttestationStatus>0</AttestationStatus>
    <AttestationCreationDate>2006-04-14</AttestationCreationDate>
  </AttestationList>

```

```

    </PersonnelList>
  =<PersonnelList>
    <Quarter>20061</Quarter>
    <NLOSSRegistrationNbr>174238092</NLOSSRegistrationNbr>
    <PLAIndicator>1</PLAIndicator>
    <CompanyID>231907796</CompanyID>
    <Trusteeship>0</Trusteeship>
    <WorkerCode>675</WorkerCode>
    <EmployerClass>096</EmployerClass>
  =<AttestationList>
    <INSS>61061310354</INSS>
    <OriolusValidationCode>0</OriolusValidationCode>
    <AttestationIdentification>766936237</AttestationIdentification>
    <AttestationSituationNbr>766936237</AttestationSituationNbr>
    <AttestationStatus>0</AttestationStatus>
    <AttestationCreationDate>2006-05-03</AttestationCreationDate>
  </AttestationList>
  </PersonnelList>
  =<PersonnelList>
    <Quarter>20061</Quarter>
    <NLOSSRegistrationNbr>73466829</NLOSSRegistrationNbr>
    <PLAIndicator>1</PLAIndicator>
    <Trusteeship>0</Trusteeship>
    <WorkerCode>495</WorkerCode>
    <EmployerClass>050</EmployerClass>
  =<AttestationList>
    <INSS>61061310354</INSS>
    <OriolusValidationCode>0</OriolusValidationCode>
    <AttestationIdentification>777906596</AttestationIdentification>
    <AttestationSituationNbr>777906596</AttestationSituationNbr>
    <AttestationStatus>0</AttestationStatus>
    <AttestationCreationDate>2006-05-11</AttestationCreationDate>
  </AttestationList>
  </PersonnelList>
  =<PersonnelList>
    <Quarter>20062</Quarter>
    <NLOSSRegistrationNbr>174238092</NLOSSRegistrationNbr>
    <PLAIndicator>1</PLAIndicator>
    <CompanyID>231907796</CompanyID>
    <Trusteeship>0</Trusteeship>
    <WorkerCode>675</WorkerCode>
    <EmployerClass>096</EmployerClass>
  =<AttestationList>
    <INSS>61061310354</INSS>
    <OriolusValidationCode>0</OriolusValidationCode>
    <AttestationIdentification>816920700</AttestationIdentification>
    <AttestationSituationNbr>1269177823</AttestationSituationNbr>
    <AttestationStatus>3</AttestationStatus>
    <AttestationCreationDate>2007-11-06</AttestationCreationDate>
  </AttestationList>
  </PersonnelList>
  =<PersonnelList>
    <Quarter>20062</Quarter>
    <NLOSSRegistrationNbr>73466829</NLOSSRegistrationNbr>
    <PLAIndicator>1</PLAIndicator>
    <Trusteeship>0</Trusteeship>
    <WorkerCode>495</WorkerCode>
    <EmployerClass>050</EmployerClass>
  =<AttestationList>
    <INSS>61061310354</INSS>
    <OriolusValidationCode>0</OriolusValidationCode>
    <AttestationIdentification>821559008</AttestationIdentification>
    <AttestationSituationNbr>821559008</AttestationSituationNbr>
    <AttestationStatus>0</AttestationStatus>
    <AttestationCreationDate>2006-07-22</AttestationCreationDate>
  </AttestationList>
  </PersonnelList>
  =<PersonnelList>
    <Quarter>20062</Quarter>
    <NLOSSRegistrationNbr>82908809</NLOSSRegistrationNbr>
    <PLAIndicator>1</PLAIndicator>

```

<CompanyID>886886638</CompanyID>
 <Trusteeship>0</Trusteeship>
 <WorkerCode>675</WorkerCode>
 <EmployerClass>096</EmployerClass>
 = <AttestationList>
 <INSS>61061310354</INSS>
 <OriolusValidationCode>0</OriolusValidationCode>
 <AttestationIdentification>1259080945</AttestationIdentification>
 <AttestationSituationNbr>1259080945</AttestationSituationNbr>
 <AttestationStatus>0</AttestationStatus>
 <AttestationCreationDate>2007-10-31</AttestationCreationDate>
 </AttestationList>
 </PersonnelList>
 = <PersonnelList>
 <Quarter>20063</Quarter>
 <NLOSSRegistrationNbr>174238092</NLOSSRegistrationNbr>
 <PLAIndicator>1</PLAIndicator>
 <CompanyID>231907796</CompanyID>
 <Trusteeship>0</Trusteeship>
 <WorkerCode>675</WorkerCode>
 <EmployerClass>096</EmployerClass>
 = <AttestationList>
 <INSS>61061310354</INSS>
 <OriolusValidationCode>0</OriolusValidationCode>
 <AttestationIdentification>891204378</AttestationIdentification>
 <AttestationSituationNbr>1269107636</AttestationSituationNbr>
 <AttestationStatus>3</AttestationStatus>
 <AttestationCreationDate>2007-11-06</AttestationCreationDate>
 </AttestationList>
 </PersonnelList>
 = <PersonnelList>
 <Quarter>20063</Quarter>
 <NLOSSRegistrationNbr>73466829</NLOSSRegistrationNbr>
 <PLAIndicator>1</PLAIndicator>
 <Trusteeship>0</Trusteeship>
 <WorkerCode>495</WorkerCode>
 <EmployerClass>050</EmployerClass>
 = <AttestationList>
 <INSS>61061310354</INSS>
 <OriolusValidationCode>0</OriolusValidationCode>
 <AttestationIdentification>912984020</AttestationIdentification>
 <AttestationSituationNbr>912984020</AttestationSituationNbr>
 <AttestationStatus>0</AttestationStatus>
 <AttestationCreationDate>2006-11-01</AttestationCreationDate>
 </AttestationList>
 </PersonnelList>
 = <PersonnelList>
 <Quarter>20063</Quarter>
 <NLOSSRegistrationNbr>82908809</NLOSSRegistrationNbr>
 <PLAIndicator>1</PLAIndicator>
 <CompanyID>886886638</CompanyID>
 <Trusteeship>0</Trusteeship>
 <WorkerCode>675</WorkerCode>
 <EmployerClass>096</EmployerClass>
 = <AttestationList>
 <INSS>61061310354</INSS>
 <OriolusValidationCode>0</OriolusValidationCode>
 <AttestationIdentification>1261354233</AttestationIdentification>
 <AttestationSituationNbr>1261354233</AttestationSituationNbr>
 <AttestationStatus>0</AttestationStatus>
 <AttestationCreationDate>2007-10-31</AttestationCreationDate>
 </AttestationList>
 </PersonnelList>
 = <PersonnelList>
 <Quarter>20064</Quarter>
 <NLOSSRegistrationNbr>174238092</NLOSSRegistrationNbr>
 <PLAIndicator>1</PLAIndicator>
 <CompanyID>231907796</CompanyID>
 <Trusteeship>0</Trusteeship>
 <WorkerCode>675</WorkerCode>
 <EmployerClass>096</EmployerClass>

```

=<AttestationList>
<INSS>61061310354</INSS>
<OriolusValidationCode>0</OriolusValidationCode>
<AttestationIdentification>979072938</AttestationIdentification>
<AttestationSituationNbr>1269121200</AttestationSituationNbr>
<AttestationStatus>3</AttestationStatus>
<AttestationCreationDate>2007-11-06</AttestationCreationDate>
</AttestationList>
</PersonnelList>
=<PersonnelList>
<Quarter>20064</Quarter>
<NLOSSRegistrationNbr>73466829</NLOSSRegistrationNbr>
<PLAIndicator>1</PLAIndicator>
<Trusteeship>0</Trusteeship>
<WorkerCode>495</WorkerCode>
<EmployerClass>050</EmployerClass>
=<AttestationList>
<INSS>61061310354</INSS>
<OriolusValidationCode>0</OriolusValidationCode>
<AttestationIdentification>1002222096</AttestationIdentification>
<AttestationSituationNbr>1002222096</AttestationSituationNbr>
<AttestationStatus>0</AttestationStatus>
<AttestationCreationDate>2007-02-02</AttestationCreationDate>
</AttestationList>
</PersonnelList>
=<Localization>
<SequenceNbr>1</SequenceNbr>
<TotalRecordsNbr>1</TotalRecordsNbr>
</Localization>
=<X001>
=<CompleteResult>
<OriginalMessageIdentification>0</OriginalMessageIdentification>
=<Result>
<ReturnCode>000000</ReturnCode>
<Codelist>820</Codelist>
</Result>
</CompleteResult>
</X001>
</L822>

```